

SALEM SCHEWAI

Design Portfolio

2024

alem

chewai

KEREN

2019

Ryerson University

Tools: AutoCAD, BIM/Revit, Adobe Photoshop,
Adobe Illustrator, Adobe Indesign

Honourable Mention for Volume Zero Architectural Competition,
Re-School 2022



FLOOR PLAN

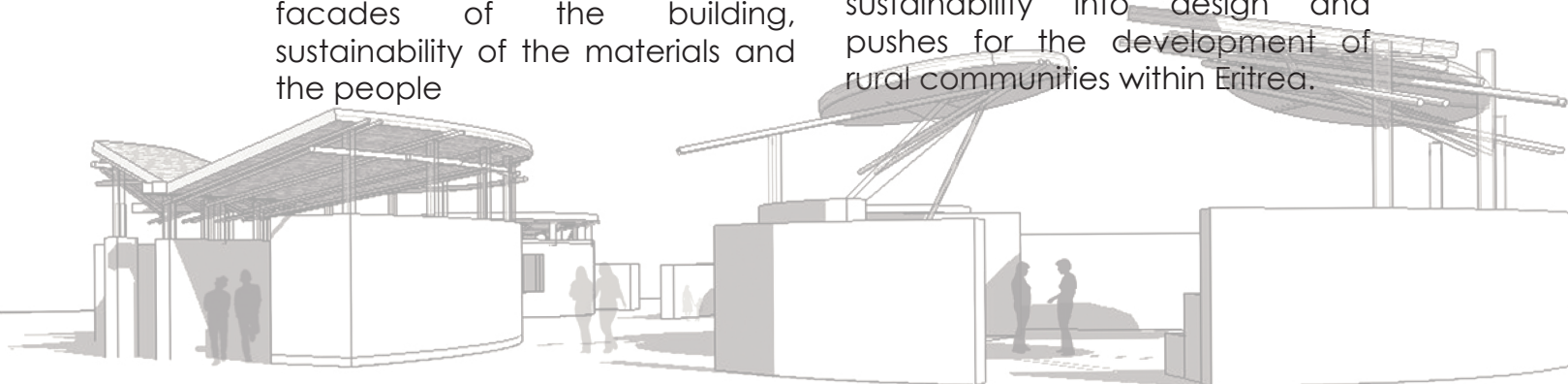
- 1 Communal Zone
- 2 Office
- 3 Learning Zone One
- 4 Learning Zone Two
- 5 Latrines
- 6 Central Water Pump

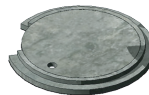
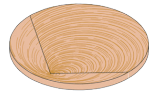




KEREN is a series of rammed earth structures intended for the inhabitants who reside within the Keren outskirts, as a place for learning, communal interaction and practicing of safe lifestyles. Most importantly the structure uses rain water harvesting techniques for easy access to filtered water for the community to use. KEREN is a community-driven center consisting of a union, bringing together the interior and exterior facades of the building, sustainability of the materials and the people

KEREN represents a link to culture and traditions with the synthesis between interior and exterior as well as offering new spaces for interaction and leisure, learning zones and latrines to practice sanitation and progress in becoming Open Defecation Free (ODF) as a community. The main communal gathering space includes rammed earth seating to encourage relaxing interaction between community members and offers shade from the harsh desert sun. The open centre space emphasizes for culture and traditions to take place; which includes, dancing, plays, large communal gatherings and meetings and selling of goods. The two learning zones offer spaces to spread knowledge about health and safety and general information for the community. The latrines provide safe and effective ways to achieve proper sanitation and water recycling. KEREN integrates landscape, culture and sustainability into design and pushes for the development of rural communities within Eritrea.





KEREN is space made for the village people of Keren, which represents traditions emerging with modern design techniques to offer new communal spaces linked with the Eritrean culture. KEREN will use local materials, such as soil [sandy clay loam; 30% clay, 70% sand] for rammed earth building construction to use as structural walls built by the community members. Roofs will be flipped for effective water catchment to be filtered and used by the community and will apply weaving techniques created by the community to create new construction techniques. The roof also creates shading and for ventilation within the spaces due to its elevated height.

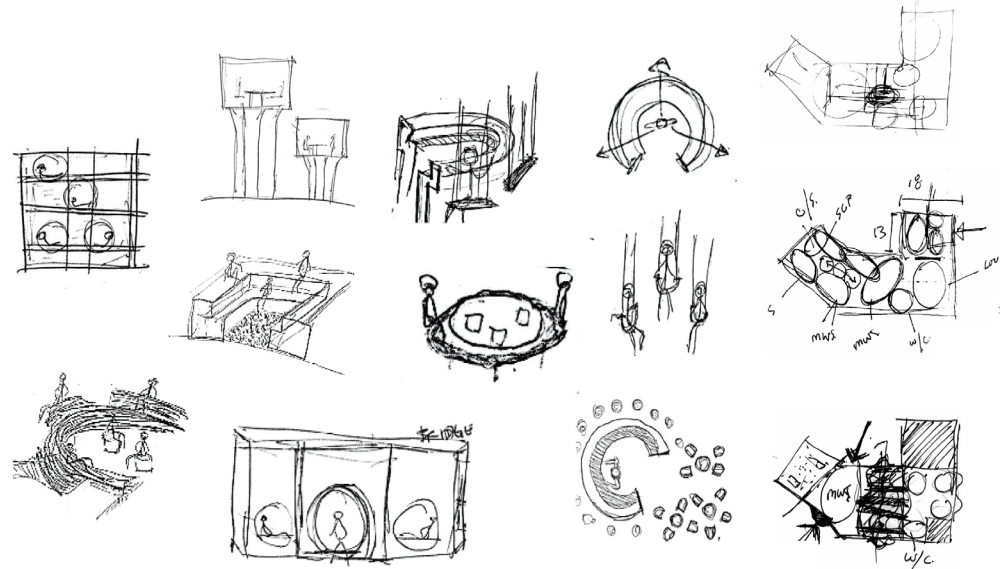


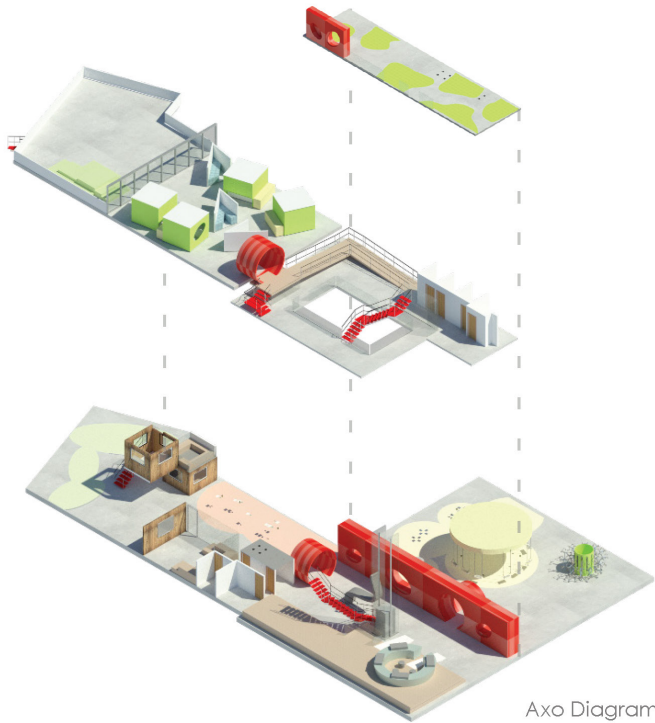
Ryerson University

Short-listed for Haworth Organic Workplace Award 2019

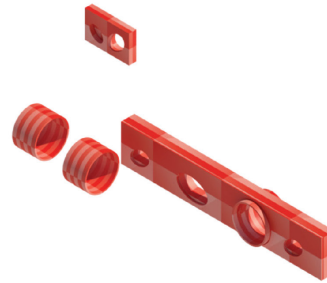


The playground-like theme and "Space within a space" structures, with strategic color, material and textures, aim to promote workplace interaction and increased productivity for users. With the freedom for employees to work in spaces they choose, creates a happy workplace and a successful business.





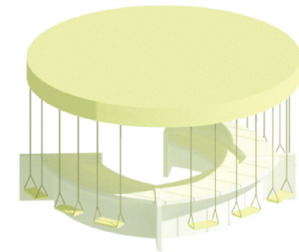
Axo Diagram



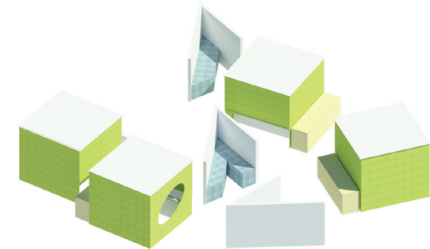
tubes



treehouse meeting rooms



cafe swings

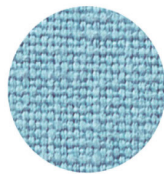


work rooms

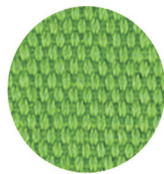
Plastic Laminate



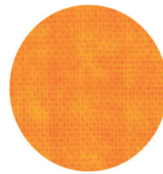
Fabric



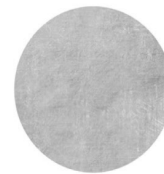
Fabric



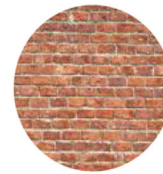
Fabric



Concrete



Brick



Wood



ENDY OFFICE

2022

Concept Project

Tools: Adobe Photoshop, Adobe Illustrator, Adobe Indesign

CLIENT:



BUDGET: \$80/sqft

NEEDS/WANTS:

RELAXED, COMFY, LOUNGEY, HOMEY, CALM, FUN, IMPRESSIVE, COLORFUL.. EMPLOYEE WELLBEING IS JUST AS IMPORTANT AS A GREAT SLEEP SURFACE. WANT A NEW VIEW, WANT TO FEEL INSPIRED

BREAKDOWN:

COLOR/MATERIAL THEORY
IDEATION/BRAINSTORMING
IMAGES
FINAL MOODBOARD + PLAN

BLUE:

CALM, PEACEFUL, SKY, WATER, SERENE

GREEN:

NATURAL, MOTIVATING, OPTIMISTIC

YELLOW:

ENERGETIC, EXPOSING, CHEERFUL

PINK + ENDY DARK PINK:

JOYFUL, CREATIVE, VIBRANT, REFRESHING, EXCITEMENT, ENERGY, PASSION, POWER, DOMINANCE

COLOR THEORY



source: www.verywellmind.com

THEME:

JOURNEY THROUGH A DREAM

1. RECEPTION + LOUNGE (adjacent)

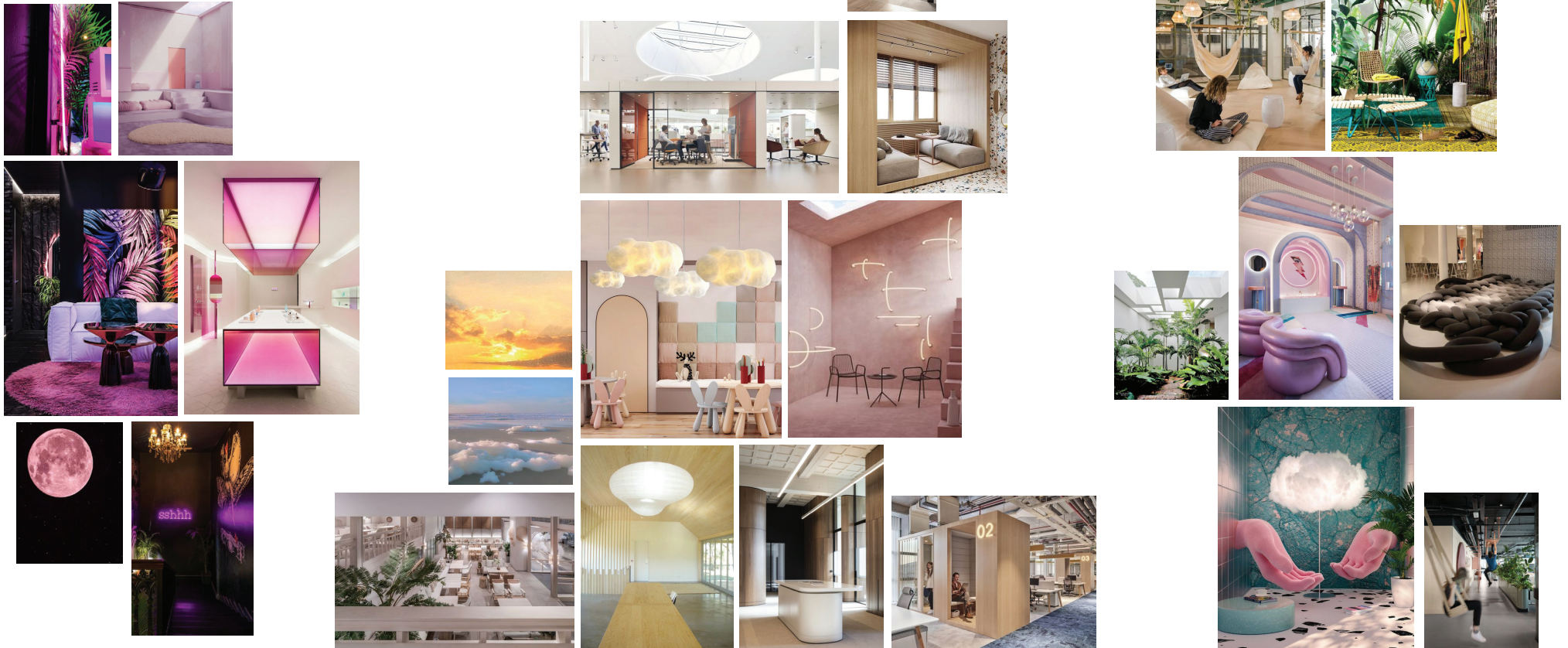
JUST FALLING ASLEEP, DARKNESS, COMFORT.
DREAM BEGINS, EXCITEMENT, ENERGY,
PASSION / WHILE ENTERING THE OFFICE

2. DESK SPACE + MEETING ROOMS + OFFICE

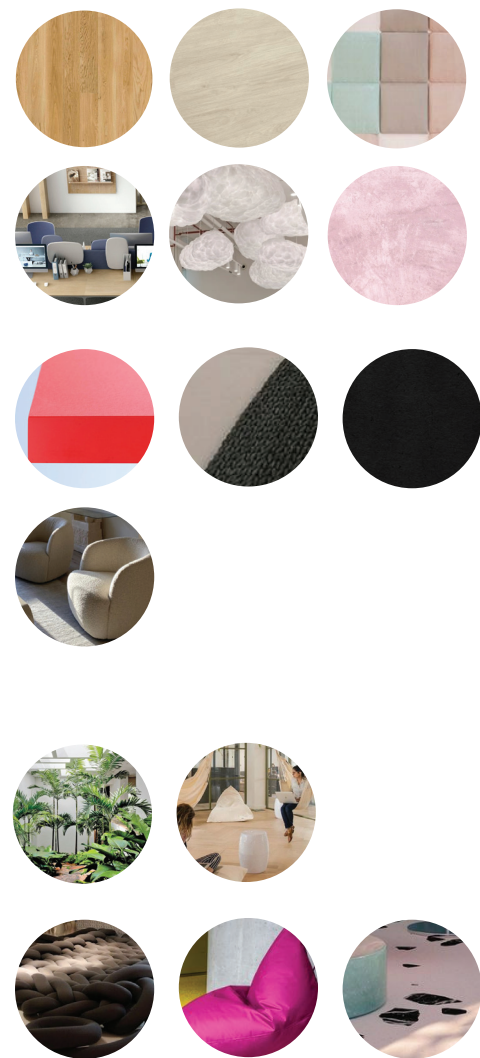
DREAMING ,CALM, RELAXED, IMAGINATIVE,
COLLABORATIVE, SKIES THE LIMIT / WORK-
ING AT DESK

3. LOUNGE SPACES

JOURNEY THROUGH DIFFERENT DREAMS/
ADVENTURES, SOMETHING NEW, EXCITING,
SPARK CREATIVITY, FUN, INSPIRATIONAL
(forest + futuristic)



FLOOR PLAN



studio SCH

2021 | 2022

Freelance

Tools: Adobe Photoshop, Adobe Illustrator, Adobe Indesign, Canva



Nami G Russom Consulting Ltd.
Business Logo
Created on Adobe Illustrator

Consulting Company



@Bsweet
Logo/Instagram Branding
Created on Adobe Illustrator

Dessert Business



@NewNakfa
Logo/Social Media Coordinator
Created on Adobe Illustrator

Community Organization

DESIGNERSBOARD

DesignersBoard.com
Logo/UI Design
Created on Adobe Illustrator

Website



blakast
Logo/Streaming Company
Created on Adobe Illustrator

Website